

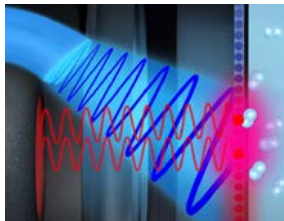
## Robust and Easy Way to Measure Dissolved Oxygen

### Introduction

Measuring dissolved oxygen in aqueous samples can be very important for quality control purposes. However it is challenging to get stable, rapid and reproducible results.

InLab OptiOx is a digital dissolved oxygen sensor with robust design combined with an optical measuring principle. It delivers highly reproducible results and fast response time. The sensor is available with three different cable lengths (1.8m, 5m, 10m) for different applications.

### Highlights



RDO® (Rugged Dissolved Oxygen) technology makes the sensor measurement and maintenance easier than ever before.



Simple handling and maintenance. No electrolyte and no stirring is required for the measurements.



Ensures data security and easy handling. The last 5 calibrations, and the factory calibration are saved on the chip.



Water tight and dustproof housing. The sensor can be fully immersed into the sample to reach optimal measurement position.

- ✓ DO
- ✓ IP67
- ✓ °C
- ✓ ISM



## Typical applications and samples



### Quality control of water

Ideal sensor for the dissolved oxygen measurement in water. The oxygen in the sample is not chemically consumed during measurement which delivers highly reproducible results.



### Biological oxygen demand (BOD)

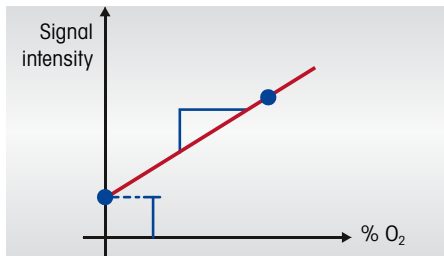
Thanks to the innovative accessories which makes the BOD determination quick, reliable and with minimal maintenance.



### Food and beverages

It is helpful in controlling the shelf life of food items by ensuring low levels of DO, because most decay processes of such products consist of aerobic fermentation that consumes oxygen.

## Tips and tricks for optimal use and care



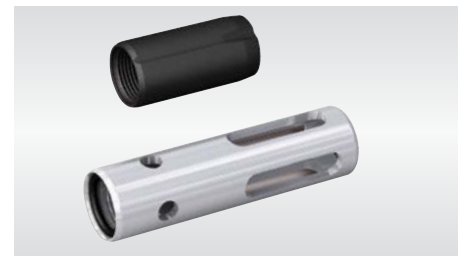
### Ensure accurate measurement with regular calibrations

Calibrate the sensor before use with vapour-saturated air (100% O<sub>2</sub> saturation of water). For DO measurement below 1 mg/L, 2-point calibration with zero oxygen tablet (51300140) and vapour-saturated air is recommended.



### Accurate results for 365 days

InLab OptiOx has a robust replaceable sensor cap. This sensor cap has a maximum lifespan of 365 days, so as to ensure optimum performance. The internal clock informs you about the due date for the cap replacement.



### The right accessories for various applications

Use OptiOx protective guard (51344632) to protect the sensor while reaching deeper measurement location like DO measurement in rivers, lakes etc. Thanks to the OptiOx BOD adapter (51344633), BOD measurement is easy in all types of BOD bottles.

## Specifications

<b>Order number</b>	<b>51344621 (1.8 m cable)</b> <b>51344622 (5 m cable)</b> <b>51344623 (10 m cable)</b>
<b>Dimensions</b>	Please see the drawing on the first page
DO range	0...500%, 0...50mg/L
Temperature range	0 – 50°C
Shaft material	PC / ABS
Temperature probe	NTC 30 kΩ
Cable length	optional lengths (1.8m, 5m and 10m)
Connection	Fixed cable: Mini-LTW
Storage condition	Dry
Protection	IP67



**Wolflabs**

# Wolf Laboratories Limited

[www.wolflabs.co.uk](http://www.wolflabs.co.uk)

Tel: 01759 301142

Fax: 01759 301143

[sales@wolflabs.co.uk](mailto:sales@wolflabs.co.uk)



**Use the above details to contact us if this literature doesn't answer all your questions.**

**Pricing on any accessories shown can be found by keying the part number into the search box on our website.**

The specifications listed in this brochure are subject to change by the manufacturer and therefore cannot be guaranteed to be correct. If there are aspects of the specification that must be guaranteed, please provide these to our sales team so that details can be confirmed.

